

Specialist Disability Accommodation Virginia

2 Vacancies



This superb Specialist Disability Accommodation (SDA) home in Virginia, north of Adelaide, is designed for comfort, accessibility, and the opportunity to make a space your own. Purpose-built with high physical support in mind, this property offers a welcoming environment.

Featuring three spacious bedrooms, this home is perfect for two tenants and provides plenty of shared and private space. It's also pet and family-friendly, ensuring a warm and inclusive atmosphere.

Conveniently located in the heart of Virginia, this property is close to local amenities, including a shopping precinct, cafes, and essential medical facilities. Nearby parks and green spaces offer the perfect spot to unwind, and public transport links ensure easy travel to surrounding areas. With its combination of accessibility and convenience, this property is an excellent choice for supported independent living.

Expressions of interest

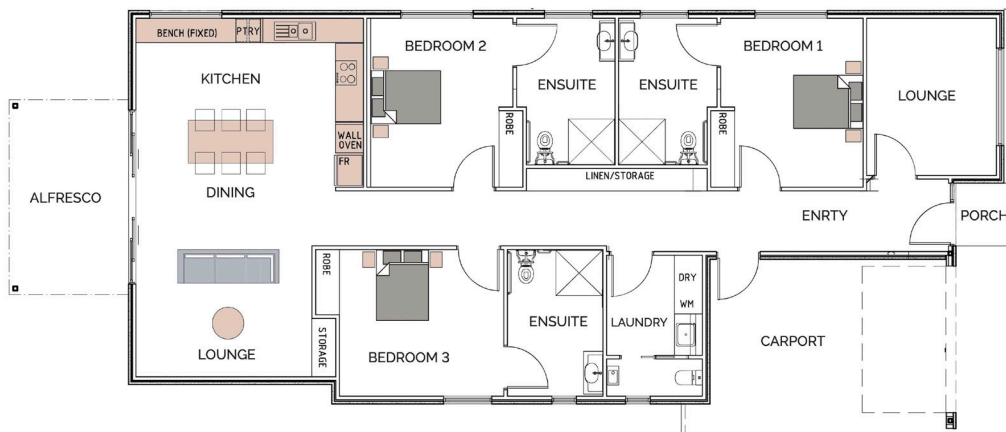
If you have any questions or would like to express your interest, please:

Call 08 8340 2000 or
email enquiries@el.org.au



**ENHANCED
Lifestyles**

**By you,
for you.**



**ENHANCED
Lifestyles**

**By you,
for you.**