

Supported Independent Living Morphett Vale



This spacious home in Morphett Vale is suited to people with 1:2 funding, offering shared Day and Night Support in a relaxed suburban setting.

Featuring a generous open plan design, the home offers comfort and flexibility—perfect for achieving personal goals and enjoying everyday routines. Located near local shops, parks, and medical facilities, it's a convenient base for an independent lifestyle with the right level of support.

With a secure backyard and undercover patio, there's plenty of room to relax or entertain outdoors in a peaceful environment.



*See reverse for more images.
Images are artist impressions.*

Expressions of interest

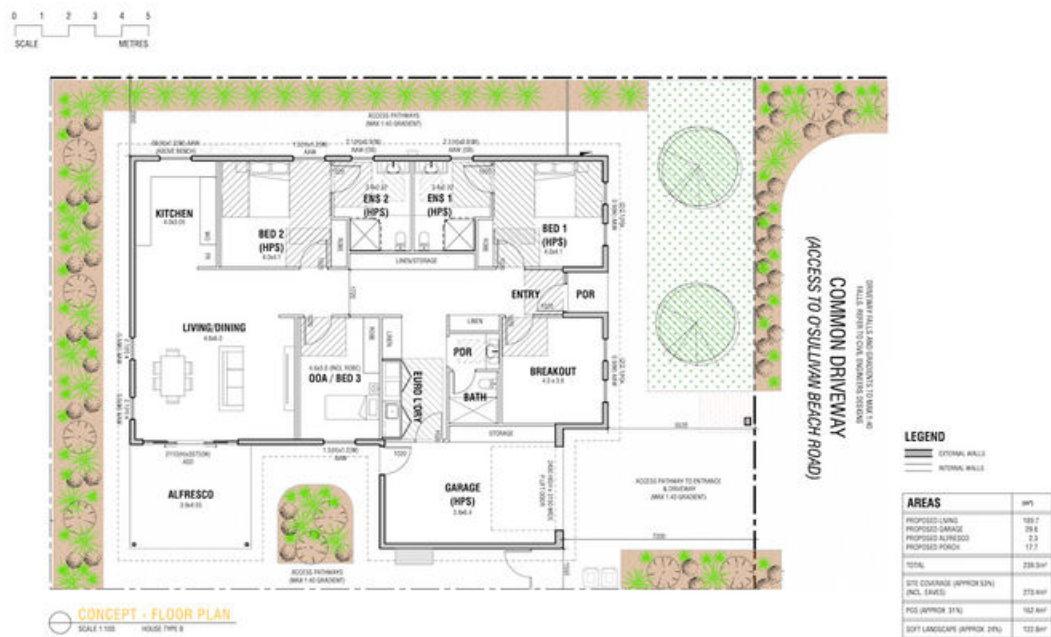
If you have any questions or would like to express your interest, please:

Call 08 8340 2000 or
email enquiries@el.org.au



**ENHANCED
Lifestyles**

**By you,
for you.**



**ENHANCED
Lifestyles**

**By you,
for you.**