

Supported Independent Living Loxton

1 Vacancy



This newly built home is perfect for those with 1:2 day and 1:2 passive support overnight.

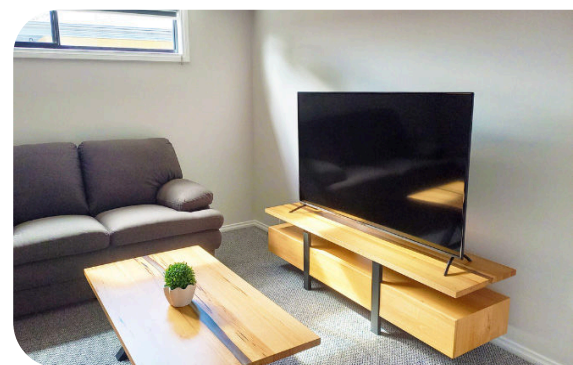
The property features a family room and a separate lounge, as well as an alfresco dining area – so while you might be sharing the home, you'll have ample space for privacy.

Plus, the home is only a 2-3 minute drive to the local supermarket, medical centre, and hospital, giving you peace of mind that you're close to everything you need.

Please note this home includes transport but is not wheelchair accessible.

Meet your housemate

I am a man aged in my 60s who enjoys socialising, fishing and spending time in the Loxton community.



See reverse for more images and floorplan.

Expressions of interest

If you have any questions or would like to express your interest, please:

Call 08 8340 2000 or
email enquiries@el.org.au



**ENHANCED
Lifestyles**

**By you,
for you.**

