

# Supported Independent Living Edwardstown

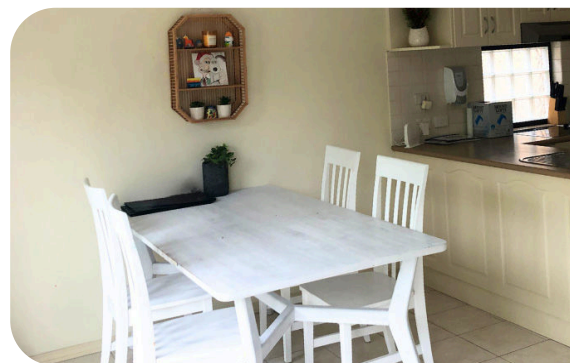
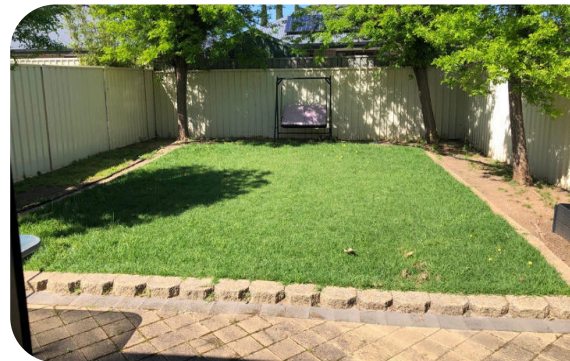


This property is perfect for one person with 1:1 funding or two people with 1:2 funding.

Centrally located, this home boasts a spacious open plan layout, making it ideal for pursuing goals and interests.

The home is also close to everything you need – including Flinders Medical Centre and Castle Plaza.

Plus, with a private secure yard and real grass, this property also features a lovely outdoor space.



See reverse for more images.

## Expressions of interest

If you have any questions or would like to express your interest, please:

Call 08 8340 2000 or  
email [enquiries@el.org.au](mailto:enquiries@el.org.au)



**ENHANCED  
Lifestyles**

**By you,  
for you.**

